

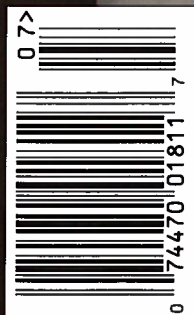
WASHINGTON

spaces

DC • MD • VA • GUIDE TO LUXURY LIVING | WASHINGTONSPACES.COM



\$5.95
SUMMER 2009
DISPLAY UNTIL 09.07.09



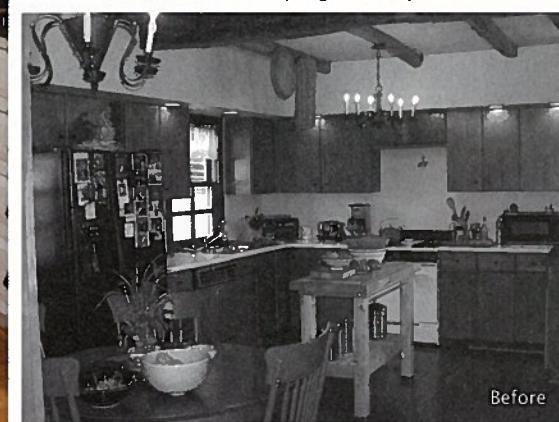
The Art Issue

Great Renovations | 69

Sensational Penthouse | 129



This project could be described as a collage – it's the product of several old barns that were deconstructed and moved from New Hampshire to an expansive vineyard in Rectortown, VA. Preservation and character were important to the homeowners, so the uneven timber was allowed to remain, imbuing the space with rustic appeal. Antique charm abounds: a pulley-operated trapdoor that leads from the kitchen to the basement, exposed wood beams throughout, and tongue-and-groove cedar ceilings. The finishing touch? An outdoor pergola and wine-tasting bar for sampling the vineyard's best.



Photographs by Gordon Beall

OUTSTANDING

INTERIOR

\$300,000 to \$500,000

Built From the Bones of Barns

by Ilex Construction & Woodworking

- Architect:** Tim Clites, Barnes Vanze Architects Inc., 540.687.5577, barnesvanze.com
- General Contractor:** Ilex Construction & Woodworking, 866.551.4539, ilexconstruction.com
- Interior Designer:** Meredith Scott, 410.377.5755
- Millwork:** Middleburg Millwork, 540.687.6318
- Doors:** TW Perry, 703.777.3030, twperry.com
- Hardware:** Clement Hardware, 410.647.4611, clementhardware.com
- Countertops:** GranTops, 301.662.5200, grantops.com
- Cabinets:** Kleppinger Design Group Inc., 703.208.2208, kleppingerdesign.com
- Floors:** Loudoun Valley Floors, 540.338.4300, loudounvalleyfloors.com
- Tile:** Weller Tile & Mosaics Inc., 703.729.0303

